

**Canon**

CANON SOLUTIONS AMERICA



## **DIGITAL MAILROOM AUTOMATION TO ENABLE BUSINESS CONTINUITY**

**SMART CHANGE FOR HEALTHCARE STARTS HERE.**

# SOLUTIONS FOR HEALTHCARE ORGANIZATIONS

Working remotely or in distributed locations doesn't mean you can't have access to physical information. A Digital Mailroom is a great solution for distributing physical mail conveniently and cost-effectively to remote employees supporting revenue cycle and other administrative functions in the healthcare space.

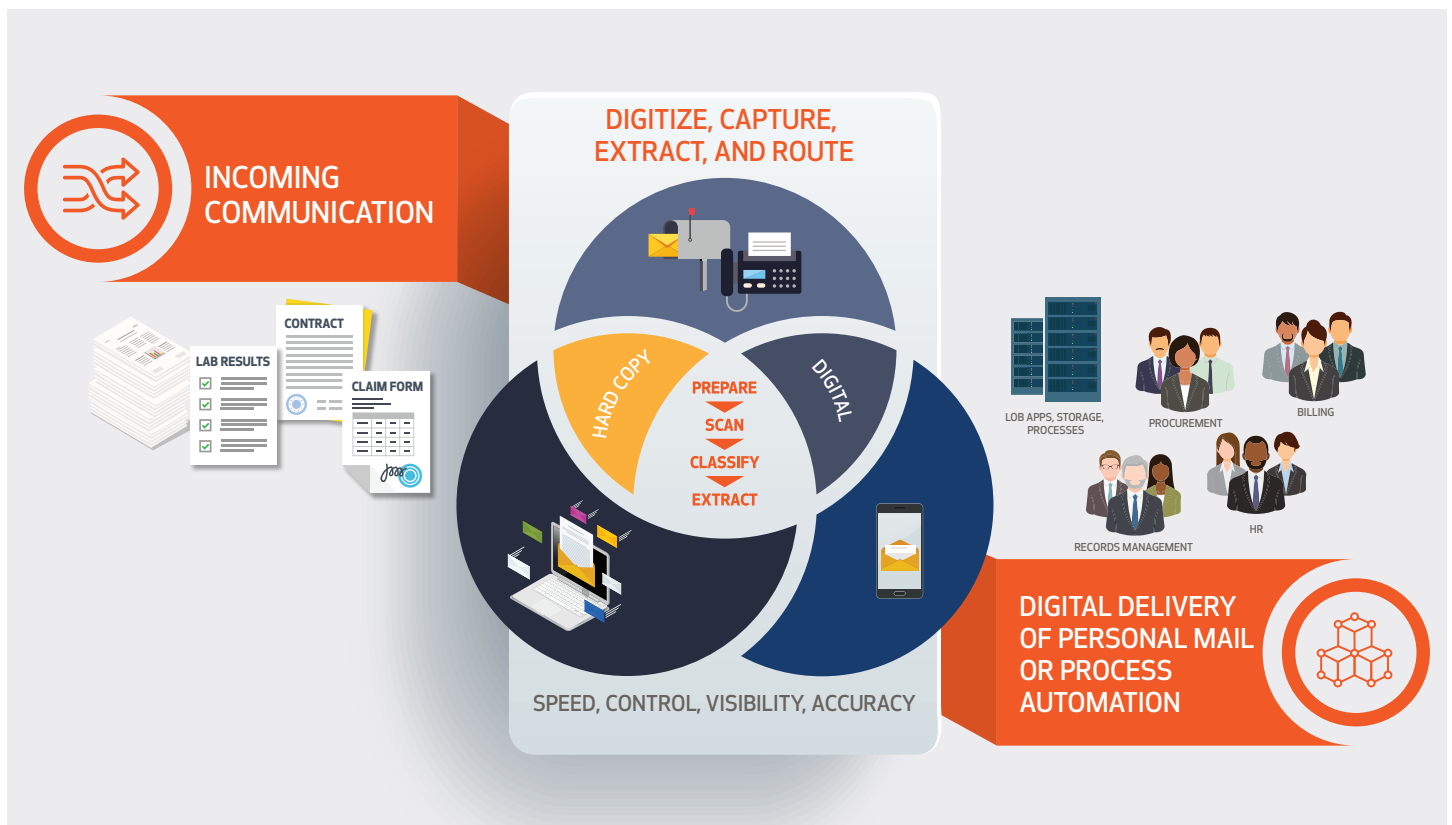
Converting paper-based lab results, insurance and claim forms, referrals, and other patient-focused documents into digital documents that can then be routed to individuals or workflows as needed for processing significantly cuts down on response times, supports timely billing and collections, and helps maintain business continuity.

## YOUR GATEWAY TO INTELLIGENT AUTOMATION

### Less friction means more efficient processing

The implementation of workflow process automation is impossible without having transactions and personal information captured in a digital form, so digital mailrooms offer added value by converting physical to digital at the source.

Canon Solutions America's Digital Mailroom solutions are an on-ramp to Digital Transformation. By integrating into our current line-of-business systems such as ERP (Enterprise Resource Planning), vendor invoice processing, Human Resources, Electronic Health Record (EHR) systems, or billing processes, we can help enhance the value of your current technology investments.



# CANON SOLUTIONS AMERICA OFFERS FLEXIBLE, STATE-OF-THE-ART SOLUTIONS TO FIT YOUR REQUIREMENTS

Whether simply routing incoming mail electronically to individuals and departments, staffing the mailroom function for you, or complete outsourcing, we offer options for implementing digital mailroom automation.

## **Software Only/SaaS Model**

A software implementation and training approach for electronically routing mail content to individuals, departments, and groups where they can choose to accept mail content, delete it, request the hardcopy, or have it archived.

## **Managed Solution**

Building upon our Software/SaaS model, with the addition of Canon Solutions America staffing for scanning incoming mail so you can allocate your resources to support your core business.

## **Outsourced Solution**

Help to virtually eliminate incoming mail from your facilities. Canon Solutions America will manage the function of electronic mail distribution remotely. A great solution for those looking to adopt a telehealth model.

## MAILROOM AUTOMATION FEATURES

Innovative technologies from Canon Solutions America can help pave the way for today's healthcare institutions to streamline administrative processes, while remaining agile for rapid response to staff demands.



### **Intelligent Data Extraction and Document Classification**

Rapidly digitize documents with powerful intelligent character recognition technology that extracts the relevant data. The resulting digital assets are then sent to recipients or integrated into existing business processes.



### **Automatic Routing of Accurate Data**

Content is captured and verified from any source at the point of entry, without the need for redundant human intervention.



### **Support Improved Efficiency and Productivity**

Streamline critical workflows by automating activities. Review and take action on data contained in mail pieces from anywhere, at any time, and on any connected device.



### **Help Decrease Paper and Reduce Storage Costs**

Convert historical paper and post-scan documentation into structured electronic information—helping you to reduce the storage needs related to vast amounts of physical records and labor-intensive manual processes.



### **Compliance and Risk Mitigation**

Digital mailroom processes support more comprehensive security measures by providing a digital footprint for documents as they move throughout the organization.

# DEEP EXPERIENCE AND SUBJECT MATTER EXPERTISE

Regardless of the size of your healthcare facility, remaining competitive in the global economy means you need to concentrate on your core business. When selecting and implementing new technology, a highly skilled technical team is the difference-maker for a successful deployment.

Canon Solutions America has the team of experts you need to help you acquire the right technology, solutions, and services for your organization. From pre-sales analysis to post-sales support, our team of technical professionals draws upon decades of technical expertise and real-world experience to help ensure you obtain the maximum benefit from your technology investment.

The Canon logo, featuring the word "Canon" in a bold, red, sans-serif font.

CANON SOLUTIONS AMERICA

A graphic element consisting of a red diagonal line on the left, followed by the text "1-800-815-4000" in black and "CSA.CANON.COM" in red.